



Fern Green

# Welcome to Fern Green Primary School

**P1 Orientation**

Friday, 18 November 2022




Welcome

# Welcome to Fern Green Primary School

Address by Principal

Time	Item
2.00pm	<b>Registration &amp; Collection of Orientation Packs</b>
2.30pm	<b>Welcome by School Leaders</b> [Students will be led to respective classrooms after this.]
2.40pm	<b>Briefing by Vice-Principal (Academic)</b> <ul style="list-style-type: none"> <li>School Matters</li> </ul>
3.15pm	<b>Briefing by Vice-Principal (Administration)</b> <ul style="list-style-type: none"> <li>Administration and Operational Matters</li> </ul>
3.45pm	<b>Briefing by Year Head (Lower Primary)</b> <ul style="list-style-type: none"> <li>Class &amp; Level Matters</li> </ul> [Ushers will assist parents to pick your child up from the respective classrooms.]
4.15pm	<b>[for Parents who have enrolled your children in the SCC]</b> <b>Introduction by School-Based Student Care Centre (SCC) Service Provider, Raffles Student Care Learning Centre LLP</b> [Ushers will assist remaining parents to pick your child up from the respective classrooms.]

Time	Item
2.00pm	<b>Registration &amp; Collection of Orientation Packs</b>
2.30pm	<b>Welcome by School Leaders</b> [Students will be led to respective classrooms after this.]
 2.40pm	<b>Briefing by Vice-Principal (Academic)</b> <ul style="list-style-type: none"> <li>School Matters</li> </ul>
3.15pm	<b>Briefing by Vice-Principal (Administration)</b> <ul style="list-style-type: none"> <li>Administration and Operational Matters</li> </ul>
3.45pm	<b>Briefing by Year Head (Lower Primary)</b> <ul style="list-style-type: none"> <li>Class &amp; Level Matters</li> </ul> [Ushers will assist parents to pick your child up from the respective classrooms.]
4.15pm	<b>[for Parents who have enrolled your children in the SCC]</b> <b>Introduction by School-Based Student Care Centre (SCC) Service Provider, Raffles Student Care Learning Centre LLP</b> [Ushers will assist remaining parents to pick your child up from the respective classrooms.]

# Programme Outline



Fern Green

# School Matters

Briefing by Vice-Principal (Academic)

Sharing by VP(Acad)



1. Curriculum Structure & School Hours
2. Advisory on School Bags
3. School Policy on Use of Mobile Devices
4. Birthday Celebrations in School
5. Communication Platforms
6. Other Useful Resources
7. Virtual Tour
8. Volunteering in School





Fern Green



# Curriculum Structure & School Hours

Time	Period			Mon (0715: USSR @MPH)	Tue (0715: USSR, SEAIP)	Wed (0715: USSR)	Thu (0715: USSR, SEAIP)	Fri (0715: USSR @MPH)
0730	1			Assembly/CCT			FTGP	
0800	2			Assembly/CCT			FTGP	
0830	3			<i>P3&amp;6 Snack Break (0845, 10 min)</i>	<i>P3&amp;6 Snack Break (0845, 10 min)</i>	<i>P3&amp;6 Snack Break (0845, 10 min)</i>	<i>P3&amp;6 Snack Break (0845, 10 min)</i>	<i>P3&amp;6 Snack Break (0845, 10 min)</i>
0900	4							
930	P1&4	5	5	P1&4 Recess	P1&4 Recess	P1&4 Recess	P1&4 Recess	P1&4 Recess
1000	5	P2&5	6	P2&5 Recess	P2&5 Recess	P2&5 Recess	P2&5 Recess	P2&5 Recess
1030	6	6	P3&6	P3&6 Recess	P3&6 Recess	P3&6 Recess	P3&6 Recess	P3&6 Recess
1100	7							
1130	8			<i>P1&amp;4 Snack Break (1145, 10 min)</i>	<i>P1&amp;4 Snack Break (1145, 10 min)</i>	<i>P1&amp;4 Snack Break (1145, 10 min)</i>	<i>P1&amp;4 Snack Break (1145, 10 min)</i>	<i>P1&amp;4 Snack Break (1145, 10 min)</i>
1200	9			<i>P2&amp;5 Snack Break (1215, 10 min)</i>	<i>P2&amp;5 Snack Break (1215, 10 min)</i>	<i>P2&amp;5 Snack Break (1215, 10 min)</i>	<i>P2&amp;5 Snack Break (1215, 10 min)</i>	<i>P2&amp;5 Snack Break (1215, 10 min)</i>
1230	10							
1300	11			<i>Daily Cleaning (10 min before dismissal)</i>	<i>Daily Cleaning (10 min before dismissal)</i>	<i>Daily Cleaning (10 min before dismissal)</i>	<i>Daily Cleaning (10 min before dismissal)</i>	<i>Daily Cleaning (10 min before dismissal)</i>
1330				<i>1325: P1&amp;2 Dismissal 1330: P3&amp;4 Dismissal 1335: P5&amp;6 Dismissal</i>	<i>1325: P1&amp;2 Dismissal 1330: P3&amp;4 Dismissal 1335: P5&amp;6 Dismissal</i>	<i>1325: P1&amp;2 Dismissal 1330: P3&amp;4 Dismissal 1335: P5&amp;6 Dismissal</i>	<i>1325: P1&amp;2 Dismissal 1330: P3&amp;4 Dismissal 1335: P5&amp;6 Dismissal</i>	<i>1325: P1&amp;2 Dismissal 1330: P3&amp;4 Dismissal 1335: P5&amp;6 Dismissal</i>
1400				Support/Enrichment Prog.	Support Prog. CCA		Support/Enrichment Prog.	Support Prog.
1430				Support/Enrichment Prog.	CCA		Support/Enrichment Prog.	
1500				Support/Enrichment Prog.	CCA		Support/Enrichment Prog.	
1530				Support/Enrichment Prog.	CCA		Support/Enrichment Prog.	
1600					CCA (Ends 1600/1630)			



## Acronyms Explained

Acronym	What it means?
<b>USSR</b>	Uninterrupted Sustained Silent Reading (Mon to Wed – EL books; Thu to Fri: MTL books)
<b>SEAIP</b>	Strategies to Ensure more Attention to Individual Pupils (one-to-one student-teacher interaction)
<b>CCT</b>	Class Contact Time
<b>FTGP</b>	Form Teacher Guidance Period
<b>CCA</b>	Co-Curricular Activities (for P3-6 students only)

# School Hours

- **Monday to Friday**

7.30am to 1.30pm

**\*Staggered Dismissal for P1 at 1.25pm**

There will be one Recess and one Snack Break.



## Reporting Time

- **Monday to Friday**  
7.30am



### Note:

Students are to report to their respective classrooms (or the Multi-Purpose Hall) by 7.30am, beyond which they would be considered late for school.



Fern Green



# Advisory on School Bags



# HPB Advisories

- Students to carry weight of no more than 15% of their body weight
- Weight of bags carried by P1 to P4 students should range not more than 3.5kg to 4.0kg



# Choice of School Bags



- Select bags of **lightweight material** with few compartments, and straps that are adjustable and **cushioned**
- Encourage children to carry personal items in a separate bag to distribute load
- Trolley bags are usually **heavier and may pose some challenges for children** as they go up and down the stairs

# Advise Your Child to:

- Pack according to the timetable
- Check that only relevant materials are packed (e.g. Activity book A or B, not both)
- Avoid bringing unnecessary items to school
- Fill small water bottles in school (unless students have health concerns)





Fern Green



# School Policy on Use of Mobile Devices



# School Policy on Use of Mobile Devices

- The school strongly discourages our students from bringing their mobile devices to school. Students may use the phone in the General Office to contact their parents, and parents can call the school should they need to contact the students during an emergency.
- Parents must request for permission to allow their children to bring their mobile devices to school using the Mobile Devices Request Form.
- Unless supervised by a teacher, the mobile device is not to be used during curriculum time within the school and is restricted for use only after dismissal, at the gate areas.
- Unless supervised by a teacher, the mobile device can only be used for the purpose of communication with parents. All other usage such as photography and video recording and activities not related to any curricular instructions (for example, use of social media and uploading of photographs not related to school work, etc.) is strictly forbidden.
- All mobile devices are to be switched off during curriculum time in the school.
- In submitting the Mobile Devices Request Form and/or with students bringing the mobile device to school, it will be deemed that the school has been given consent to confiscate the mobile device, and if necessary to access the contents of the mobile device should the student violate the school's mobile device policy. The student may also be asked to delete the contents under the supervision of relevant personnel in the school.
- Upon confiscation of a mobile device, the student can retrieve the mobile device from the General Office at the end of the school day. Parents of repeat offenders will be required to collect these devices personally from the school.



The school has taken all due considerations regarding PDPA to safeguard student privacy. However, the school reserves the right to retain any mobile device brought to the school by students in the interest of student safety. In the event that there is suspicion of objectionable material in the mobile device, the device will be retained and accessed by the school, regardless of whether prior permission was granted to bring the mobile device into the school.





## **Note:**

*Photographs or video images of you, your child or legal guardians may be taken during school activities and events such as classroom lessons, CCA, school camps, or school concerts. The school may use and publish such photographs or video recordings in school publications, the school's website, social media channels, or other communication channels.*



Fern Green



# Birthday Celebrations in School



# Birthday Celebrations in School

## Keep it Simple yet Meaningful

Important moments for students to celebrate their friendships and to show their appreciation for one another

vs

Rising concerns over food allergies and the consumption of junk food



# Birthday Celebrations in School

## Keep it Simple yet Meaningful

Important moments for students to celebrate their friendships and to show their appreciation for one another

Could be achieved with a birthday song, great company and well wishes from friends.



# Birthday Celebrations in School

## Keep it Simple yet Meaningful

Rising concerns over food allergies and the consumption of junk food

Could be avoided with no sweet treats (in goodie bags).





Fern Green

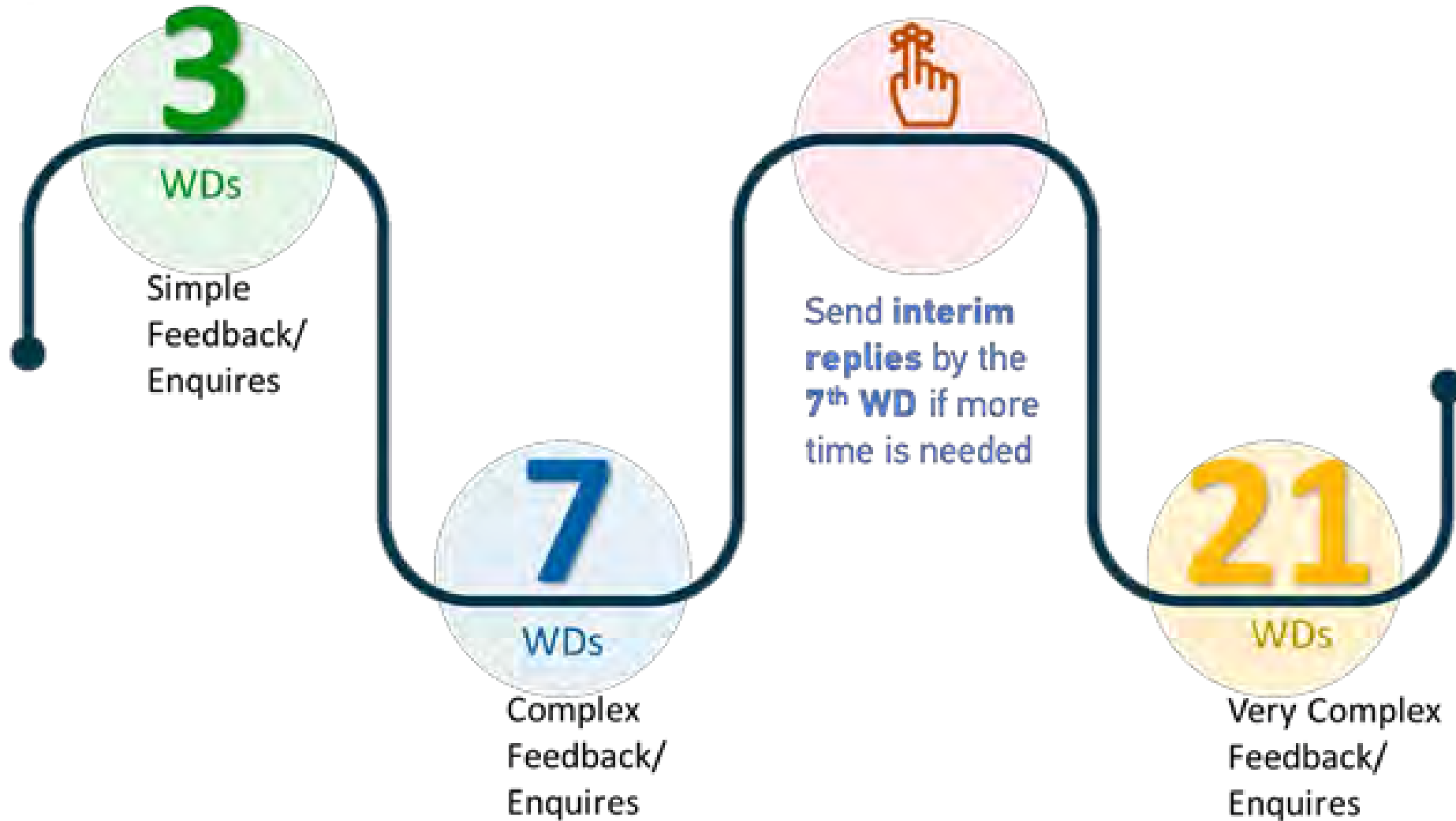


# Communication Platforms




- School Website ([www.ferngreenpri.moe.edu.sg](http://www.ferngreenpri.moe.edu.sg))
- Student Handbook
- Parents Gateway (PG)
- Weekly Parents Notifications via Parents Gateway (**Every Wednesday**)
- Email ([ferngreen\\_ps@moe.edu.sg](mailto:ferngreen_ps@moe.edu.sg))
- Staff Email Addresses (<https://ferngreenpri.moe.edu.sg/about-us/our-staff>)
- Phone Call (**6834 3100**)
- Form Teachers and/or Subject Teachers' Meetings with Parents
- Workshops/Briefings for Parents
- Newsletters
- Parent-Child-Teacher Conference (PCTC)
- Focused Group Discussions (FGD)
- Conversations with Parent Support Group (PSG) & Parent Volunteers (PVs)

# FGPS Communication Policy



NB: Phone Calls and Instant Messages may not be attended to between 5.00pm and 7.00am.

# School Website



ABOUT USOUR CURRICULUMSPECIAL PROGRAMMESACCOLADES & ACHIEVEMENTSSTAKEHOLDERS & PARTNERSHIPSGENERAL INFORMATIONGALLERYCONTACT US

[SITEMAP](#)

GENERAL INFORMATION

SCHOOL CALENDAR

Home &gt; General Information &gt; School Calendar

FGPS Calendar

Today< > November 2019

WeekMonthAgenda

Mon	Tue	Wed	Thu	Fri	Sat	Sun
28 Public Holiday T4W7	29 8am P1 LJ Compass 1 (1R1R2 8am P2 PAL Lesson Demo: 2C	30 12:15pm Assembly: P1/P2: Art	31 8am P2 PAL Lesson Demo: 2R	1 Nov 7:30am Uninterrupted Sustaine 8am P1 PAL Lesson Demo: 1D	2	3
4 T4W8 7:30am Morning Assembly Pro 8am Parents Appreciation Bre	5	6 12:15pm Assembly: P1/P2: AR	7	8 7:30am Morning Assembly Pro	9 8am P1&2: PCTC	10
11 T4W9	12	13 12:15pm Assembly: APD rehea	14 12:15pm Use Your Hands Cam	15 Eat With Your Family Day (S	16 School Vacation	17

FGPS Calendar

Today

◀

▶

November 2019

▼

Week

Month

Agenda

▼

Mon	Tue	Wed	Thu	Fri	Sat	Sun
28 Public Holiday T4W7 8am P1 LJ Compass 1 (1R1R2 8am P2 PAL Lesson Demo: 2C	29 8am P2 PAL Lesson Demo: 2C	30 12:15pm Assembly: P1/P2: Art	31 8am P2 PAL Lesson Demo: 2R	1 Nov 7:30am Uninterrupted Sustaine 8am P1 PAL Lesson Demo: 1D	2	3
4 T4W8 7:30am Morning Assembly Pro 8am Parents Appreciation Brei	5 12:15pm Assembly: P1/P2: AR	6	7 7:30am	8	9	10
11 T4W9 8am P1&2: PCTC	12 12:15pm Assembly: APD rehea	13 12:15pm Use Your Hands Cam	14 Eat W 8:30am Award Presentation Da 2:30pm P1 Orientation (for 202	15	16	17
18 School Vacation (9:00am) Sales of School Uniforms & Books	19	20	21	22	23	24
25 School Vacation (9:00am) Sales of School Uniforms & Books	26	27	28	29	30	1 Dec

Events shown in time zone: Singapore Standard Time

+

GoogleCalendar

Subscribe to our school calendars here!

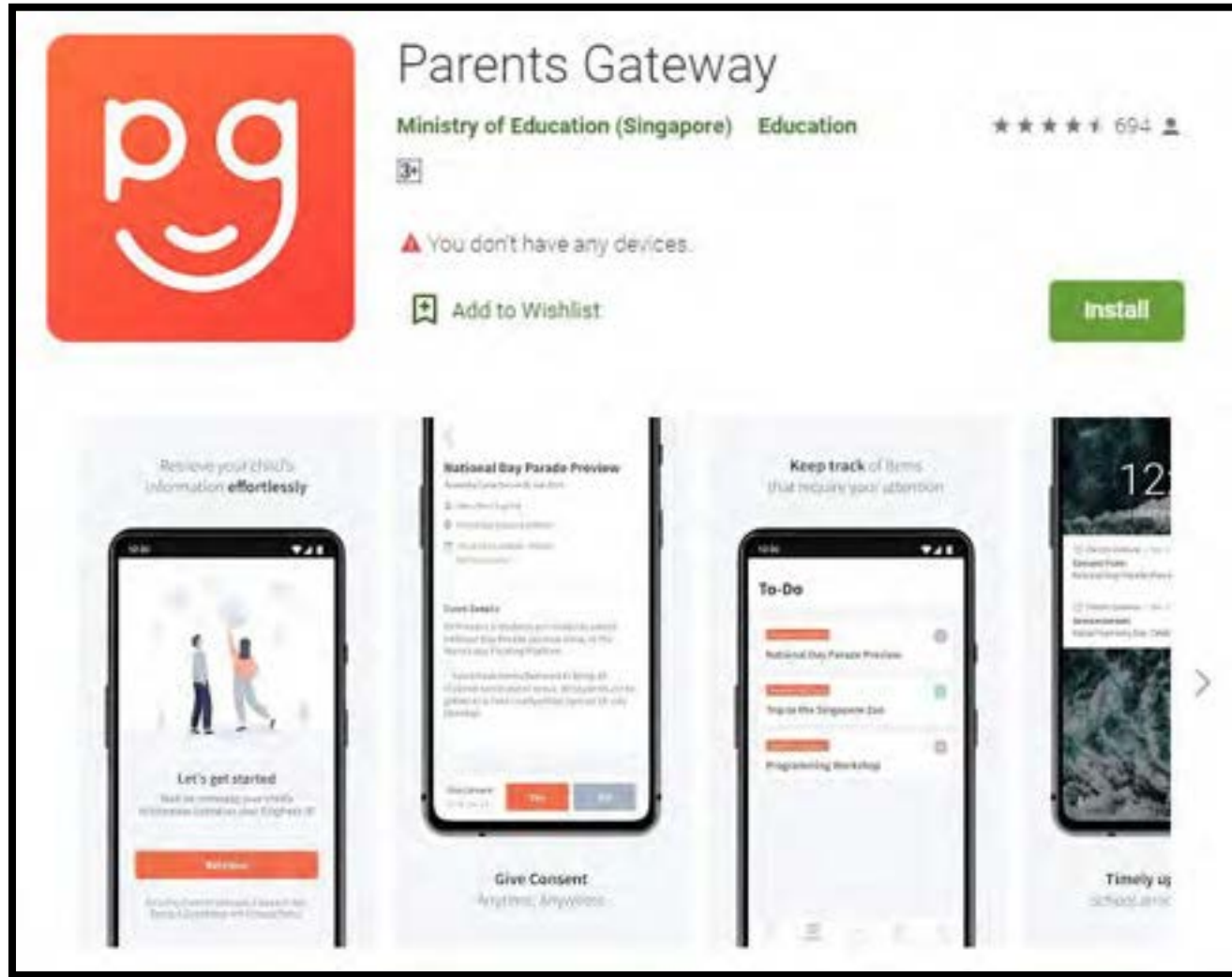


# Student Handbook

- Communication of Homework with Students & Parents
- Notes from Teachers/Parents
- School Rules & Policies etc.
- All Students will receive their Student Handbook **when school reopens**



# Parents Gateway (PG)



We have been going 'Paperless' since the Start of School

Besides the Weekly Parents Notifications, School and Teachers will also leverage this platform to provide Key Updates.



Fern Green

# Other Useful Resources

Briefing by Vice-Principal (Academic)

Sharing by VP(Acad)

## Other Useful Resources

ARE YOU A  
**HELICOPTER  
PARENT?**



You might be one if you...





Do his woodwork project for him so he can get an A for it.



You want to help,  
but do you know  
that this...



Debate with his teacher for  
one more mark so he goes  
one grade up.



Fly to school with your  
child's homework when  
he forgets to bring it.

## Ministry of Education's (MOE) Facebook

<https://www.facebook.com/moesingapore/>

May hinder your child from  
becoming independent, savvy  
and street-smart?

May make your child think he  
isn't good enough, hurt his  
self-confidence and raise his  
anxiety level?





### LET THEM KNOW IT'S OK TO FAIL

Every mistake is a learning opportunity.  
Share how you've learnt to do so from  
your own stumbles.

## Why not help your children fly on their own instead?

HERE ARE 4 WAYS.



### LET THEM DEVELOP THEIR OWN GOALS

Avoid telling them how many marks  
you expect. Instead, guide them to  
stage achievable goals!



### LET THEM DO THEIR OWN HOMEWORK

Help them think through and arrive  
at the solutions, without feeding  
them the answers.

### Ministry of Education's (MOE) Instagram:

<https://www.instagram.com/moesingapore/?hl=en>



### LET THEM STAND UP FOR THEMSELVES

Forgot their homework? Let them face  
the consequences (and the teacher)  
to build character.



## Avoid These Pitfalls When Preparing Your Child for Primary School

→  
Swipe to find  
out more!

### Overlooking critical life skills and positive attitudes towards learning

While an academic foundation is part of a good start for your child, don't forget to also develop their independence, sense of responsibility, and positive attitude towards learning such as perseverance and curiosity.

These skills will help them ease into primary school confidently.

### Forgetting about school-home partnership

While teachers in school will be doing their best to help your child transit smoothly, they need your partnership to reinforce values, life skills and positive attitudes towards learning at home.

Partner the teacher by helping your child learn responsibility through packing their own bags or buying food and managing money during recess.

### Assuming that children know how to make friends naturally

A large part of what makes school fun is the memories your child will have with their friends, but making friends is not something that comes naturally to all children. Help them practise their social skills through playtime opportunities with other children and teaching them to share and take turns.

Check out our Parent-Child  
Activity Book for more tips!

## Ministry of Education's (MOE) Facebook

<https://www.facebook.com/moesingapore/>

## Transition from Preschool to Primary School



### Parent Kit

Missed our  
last issue?

[Click here](#) for our  
previous Parent Kits



© Communications & Engagement Group, Ministry of Education

## Ministry of Education's (MOE) Instagram:

<https://www.instagram.com/moesingapore/?hl=en>



Fern Green

# Virtual School Tour

Briefing by Vice-Principal (Academic)

Sharing by VP(Acad)



# Virtual Tour @FGPS



<https://qr.go.page.link/3dvpi>



Classrooms



School Garden







Outdoor Learning  
Stations



The Courtyard





Theatre @ the Library





Parade  
Square

Art Muse





Canteen

Sheltered  
Basketball  
Court







Dental Clinic

Book Shop





Band Room

PAL Rooms







Zero Waste  
Corridor

Open Spaces for  
Outdoor Activities





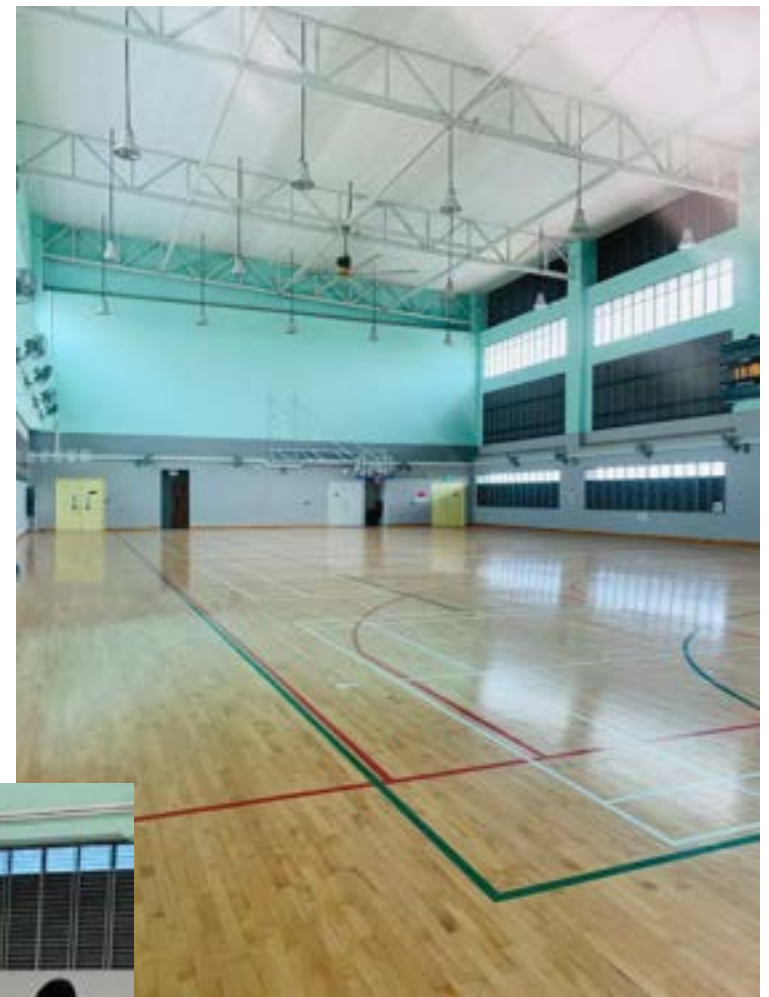


Teaching Laboratory

Virtual Tour @FGPS



Multi-Purpose  
Hall



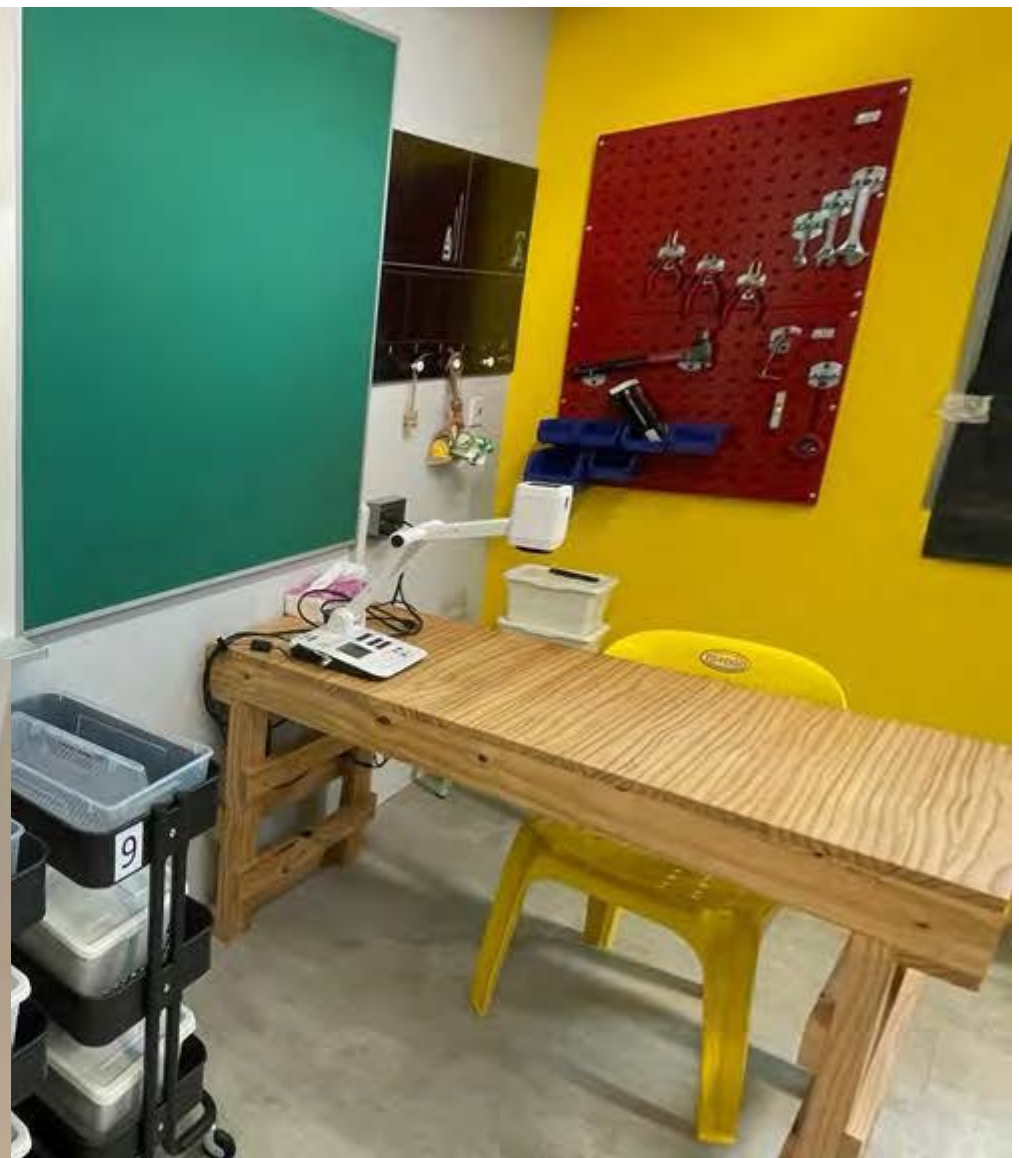
Indoor  
Sports  
Hall



# Library







Maker Space



Art Room

Computer  
Laboratory







Dance Studio

Music Room





Fern Green

# Volunteering in School

Briefing by Vice-Principal (Academic)

Sharing by VP(Acad)



# Volunteering in School

*“Research shows that your child can benefit from your active involvement in his or her school.”*

## **Parental involvement:**

- Increases student achievement including better academic performance
- Promotes positive self-esteem
- Creates positive behaviour
- Impacts attendance
- Improves graduation success

# Volunteering in School

- Be a part of our Parent Support Group (PSG)

*or*

- Volunteer on an ad hoc basis




# Parents' Support is Key to Success







**Who are in our  
Parents Support Group?**

Time	Item
2.00pm	<b>Registration &amp; Collection of Orientation Packs</b>
2.30pm	<b>Welcome by School Leaders</b> [Students will be led to respective classrooms after this.]
2.40pm	<b>Briefing by Vice-Principal (Academic)</b> <ul style="list-style-type: none"> <li>School Matters</li> </ul>
 3.15pm	<b>Briefing by Vice-Principal (Administration)</b> <ul style="list-style-type: none"> <li>Administration and Operational Matters</li> </ul>
3.45pm	<b>Briefing by Year Head (Lower Primary)</b> <ul style="list-style-type: none"> <li>Class &amp; Level Matters</li> </ul> [Ushers will assist parents to pick your child up from the respective classrooms.]
4.15pm	<b>[for Parents who have enrolled your children in the SCC]</b> <b>Introduction by School-Based Student Care Centre (SCC) Service Provider, Raffles Student Care Learning Centre LLP</b> [Ushers will assist remaining parents to pick your child up from the respective classrooms.]

# Programme Outline



Fern Green

# Administration & Operational Matters

Briefing by Vice-Principal (Administration)

Sharing by VP(Admin)





1. Gate Opening Hours
2. Important Information on School Uniform
3. Important Information on School Canteen
4. Other Administration Matters & Resources



Fern Green



# Gate Opening Hours

# Main Gate (for Vehicles)

School Days		School Holidays	
Monday to Friday	6.45am to 7.30am	Monday to Friday	7.00am to 7.00pm
	8.00am to 1.00pm		
	1.55pm to 7.00pm		



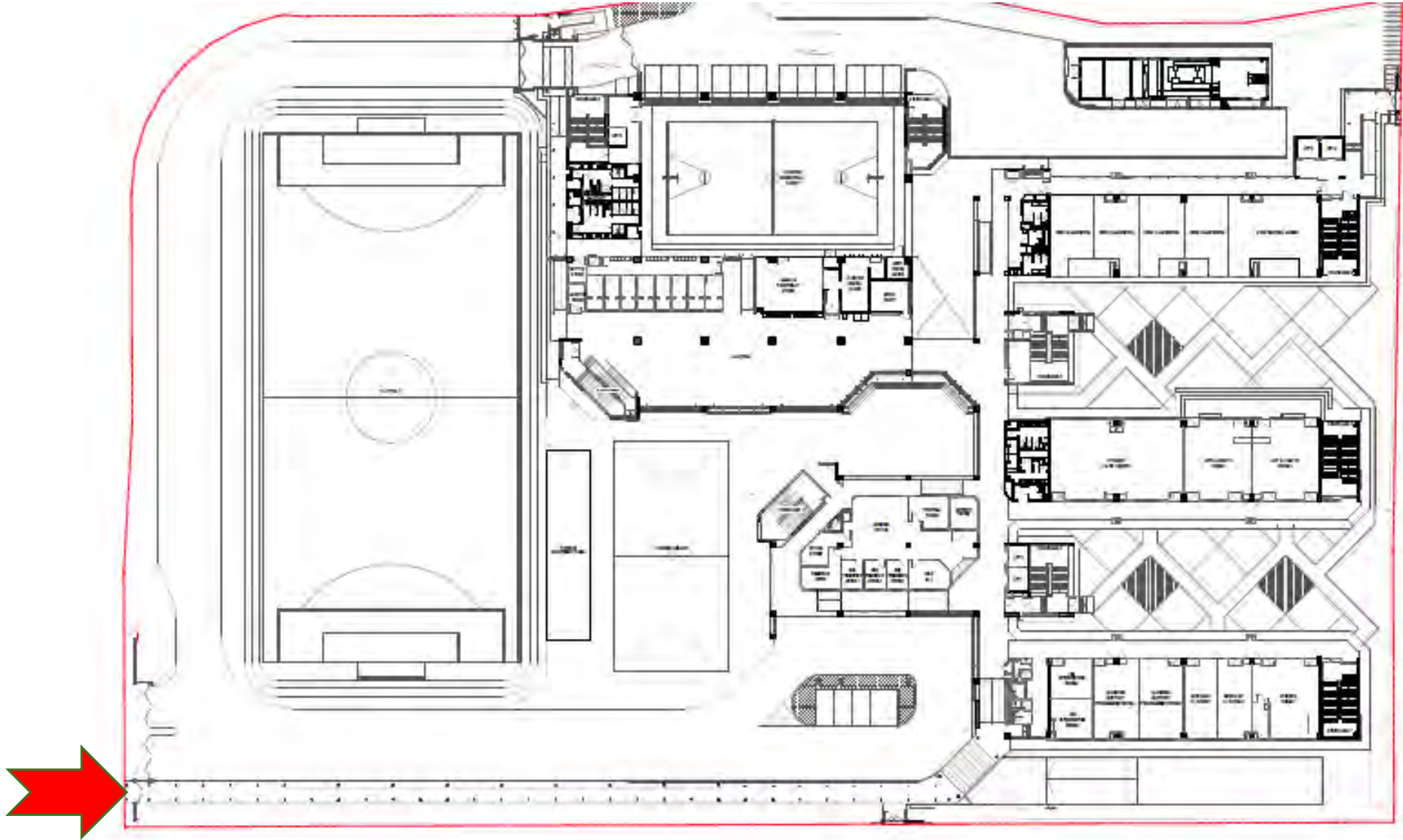
Main Gate  
will be closed  
from 7.30am  
to 8.00am

Gate Opening Hours



# Gate 1 (next to Main Gate)

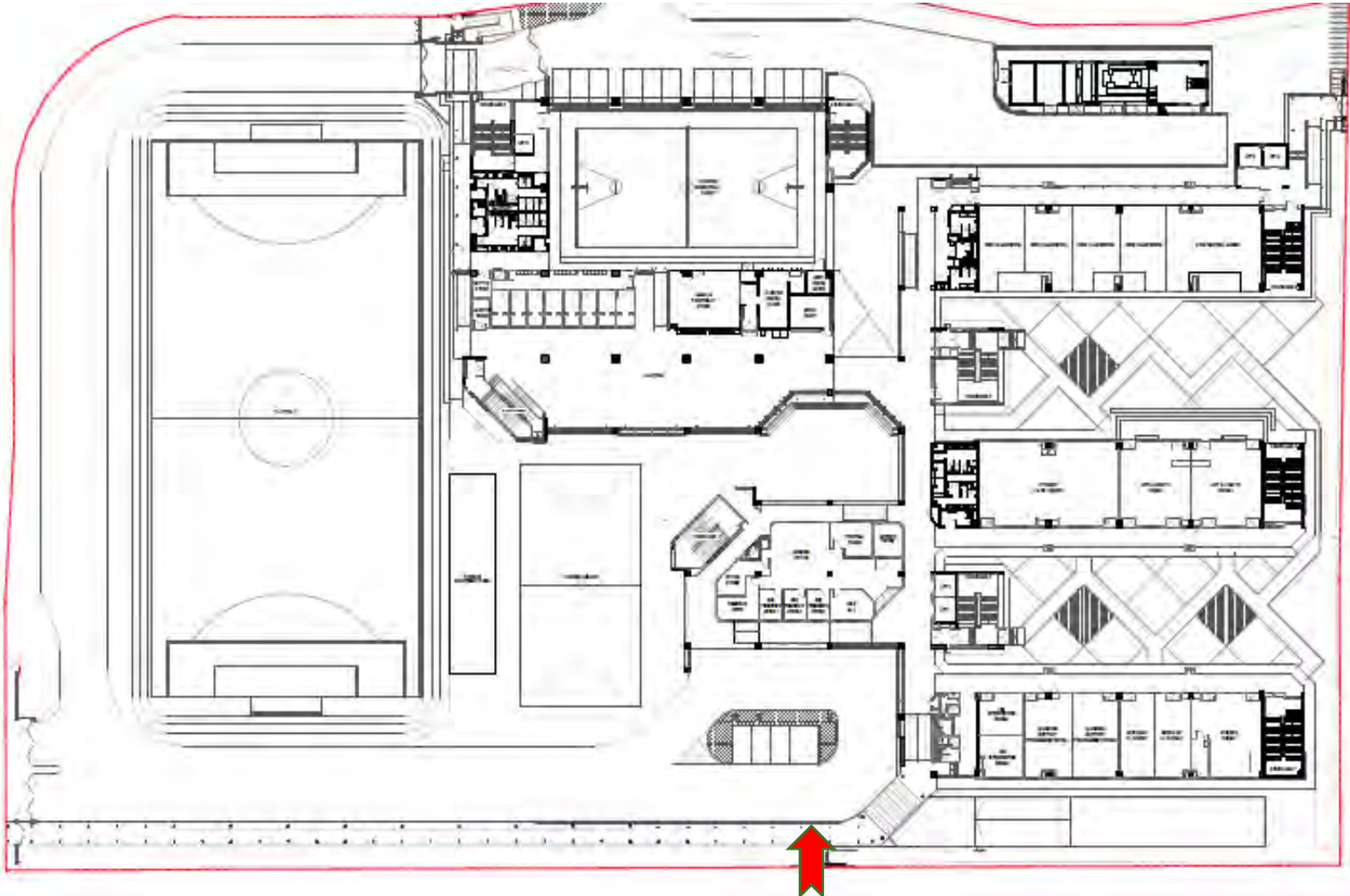
School Days		School Holidays	
Monday to Friday	6.45am to 1.00pm	Monday to Friday	7.00am to 7.00pm
	1.55pm to 7.00pm		



Gate Opening Hours

# Gate 2 (nearest to General Office)

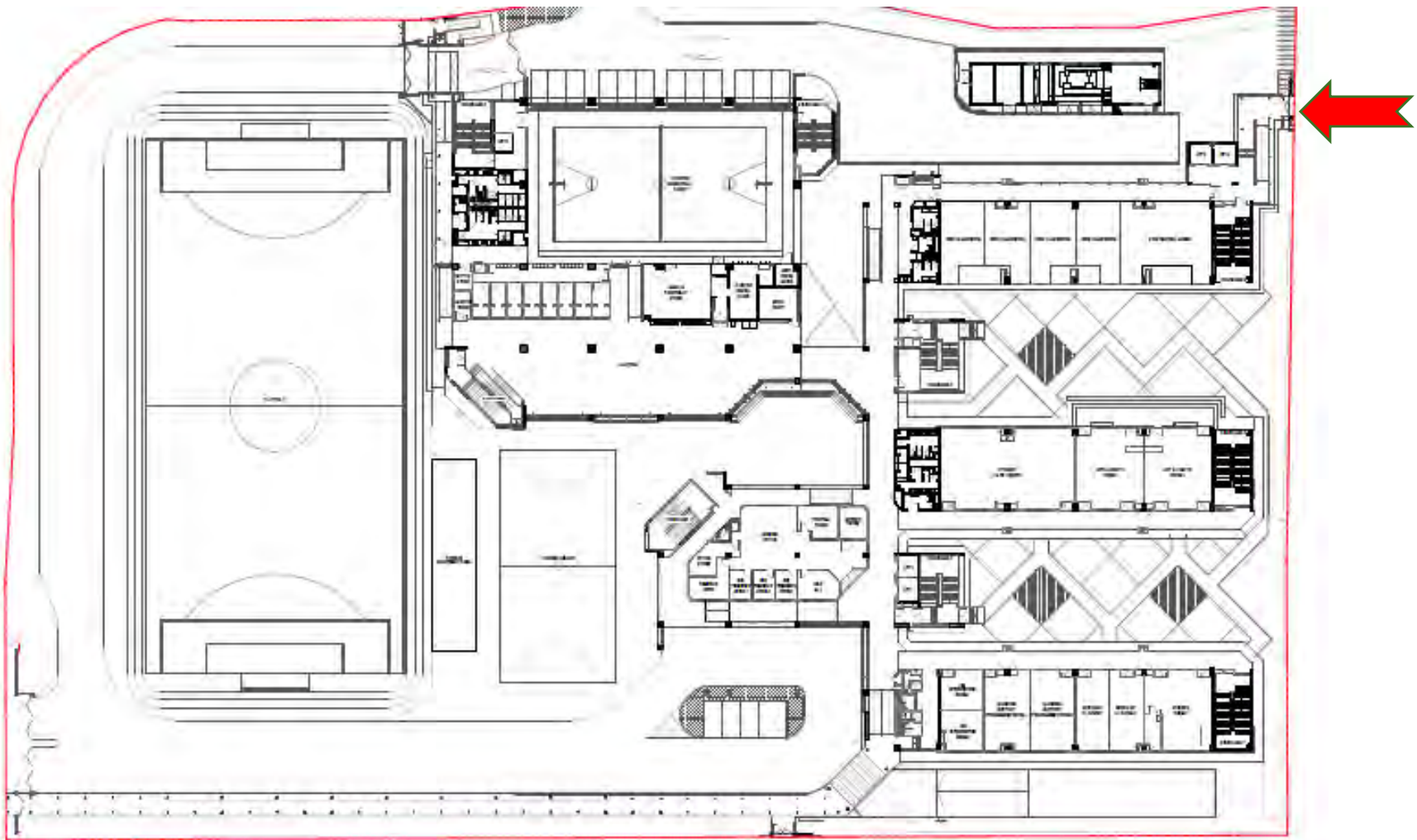
School Days		School Holidays	
Monday to Friday	6.45am to 8.00am	Monday to Friday	7.00am to 8.00am
	1.25pm to 2.00pm		5.45pm to 7.00pm
	5.45pm to 7.00pm		



Gate Opening Hours

Gate 3 (Strictly for MOE Kindergarten @ Fern Green only)

School Days		School Holidays	
Monday to Friday	7.00am to 7.00pm	Monday to Friday	7.00am to 7.00pm

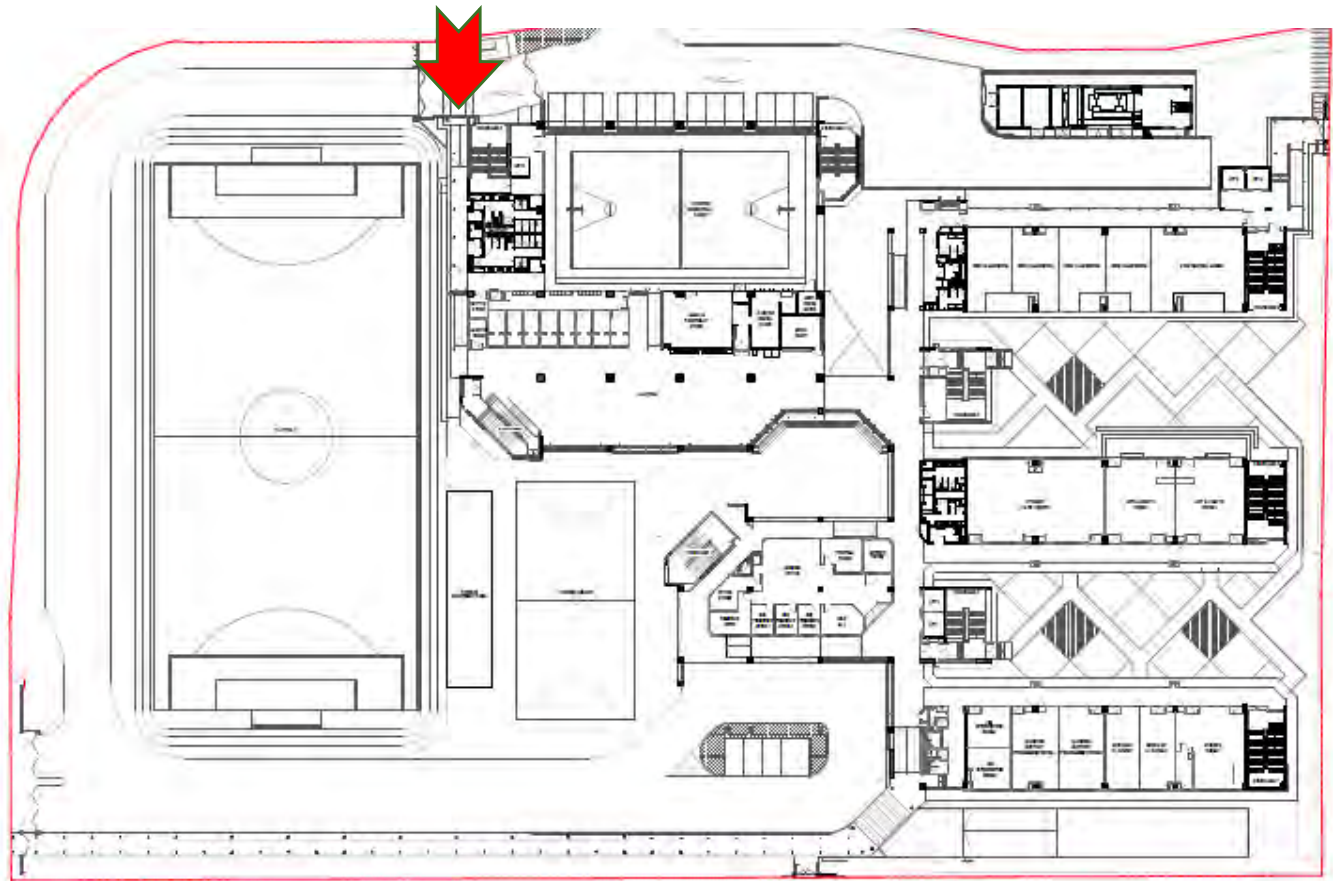


Gate Opening Hours



# Gate 4

School Days		School Holidays	
Monday to Friday	6.45am to 7.45am [for all students]	Monday to Friday	Closed
	1.30pm to 2.00pm		



Gate Opening Hours



Fern Green



# Important Information on School Uniform

Uniform Rules	Days with PE Lessons	Days with No PE Lessons
<b>Primary 1</b>	<p><b>PE Attire:</b></p> <p>School Polo T-Shirt and PE Shorts.</p> <p><i>Students can continue to put on their PE attire for the whole day.</i></p>	<p><b>Half Uniform:</b></p> <ul style="list-style-type: none"> <li>• School Polo T-Shirt and Bermuda Shorts (Boys)</li> <li>• School Polo T-Shirt and Skirt (Girls)</li> </ul>



# Half-Uniform



School Polo T-Shirt with School Bermuda Shorts (Boys)

School Polo T-Shirt with School Skirt (Girls)

- **Black Canvas Shoes**  
(that cover the entire feet)  
with Laces or Velcro  
*(\*Mary Jane Shoes are not  
designed for any type of  
physical activity, and will  
not be allowed to be worn to  
school.)*
- White Socks



# Name Tag



**1 cm above School Crest**





Fern Green



# Important Information on School Canteen

## Useful Tips

1. Give your child pocket money on a daily basis.
2. Give pocket money in denominations of \$0.10, \$0.20, \$0.50, \$1.00.
3. Prepare your child for small transactions. Get them to practise when you go shopping with them.



**Example**



# YUMMY NOODLES



## DAILY ITEMS

<b>FISH BALL NOODLE</b>	<b>\$1.70 / \$2.00</b>
<b>TOM YUM NOODLE</b>	<b>\$1.70 / \$2.00</b>
<b>CURRY NOODLE</b>	<b>\$1.70 / \$2.00</b>
<b>KWAY CHAP</b>	<b>\$1.70 / \$2.00</b>
<b>MINCED MEAT</b>	<b>\$1.70 / \$2.00</b>
<b>NOODLE</b>	<b>\$1.70 / \$2.00</b>
<b>FRIED BEE HOON</b>	<b>\$1.70 / \$2.00</b>

**\*NOODLES**

**\*VEGETARIAN OPTION**

<b>MEATS (PORK / CHICKEN)</b>	<b>\$0.60</b>
<b>CHICKEN NUGGET</b>	<b>\$0.50</b>
<b>CHICKEN PATTY</b>	<b>\$1.20</b>
<b>OTHERS (VEG/TOUFU/ EGG/FISHCAKE)</b>	<b>\$0.60</b>
<b>ASSORTED PACKET</b>	<b>\$1.00</b>
<b>DRINK</b>	<b>\$0.70</b>
<b>DUTCH LADY PACKET MILK</b>	<b>\$1.00</b>





**Example**



# YUMMY NOODLES



## MONDAY

**IPOH HOR FUN**

**\$1.70 / \$2.00**

## THURSDAY

**LOR MEE**

**\$1.70 / \$2.00**

## TUESDAY

**CHICKEN NOODLE**

**\$1.70 / \$2.00**

## FRIDAY

**HOR FUN**

**\$1.70 / \$2.00**

## WEDNESDAY

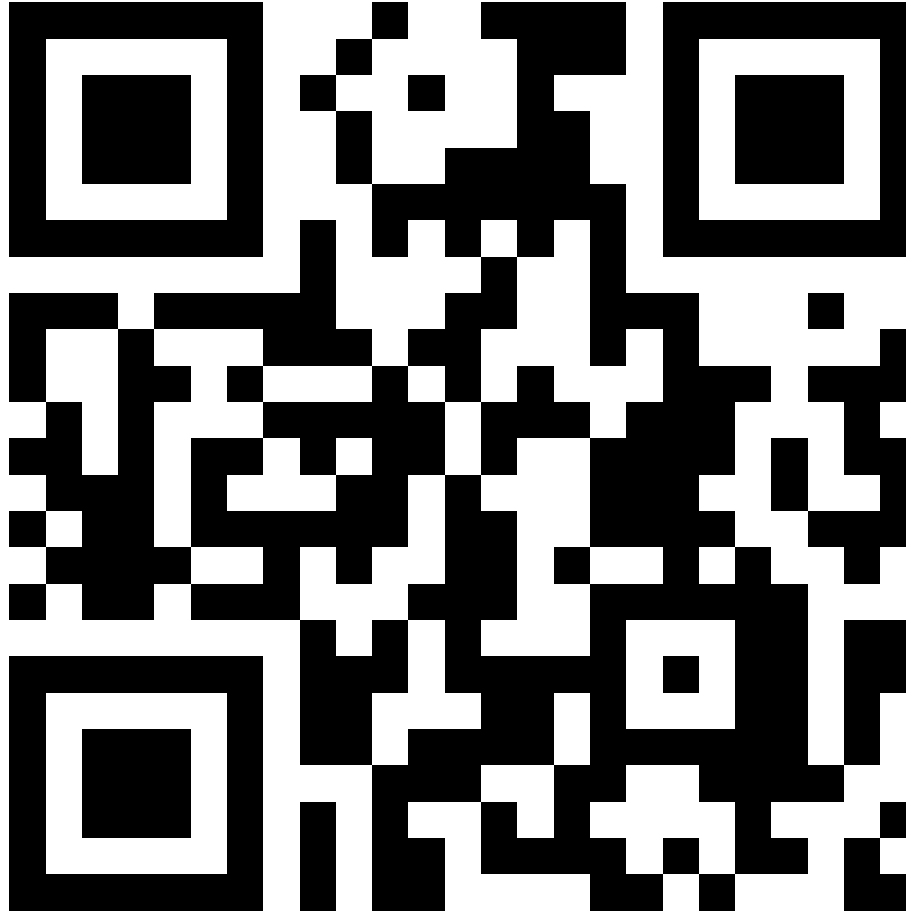
**WANTON NOODLE**

**\$1.70 / \$2.00**



*All meals come  
with a fruit!*

**Download the Canteen Menus here:**



Scan the QR Code with your mobile phone/device  
OR click on the link here: <https://qr.go.page.link/YJnxC>



Fern Green

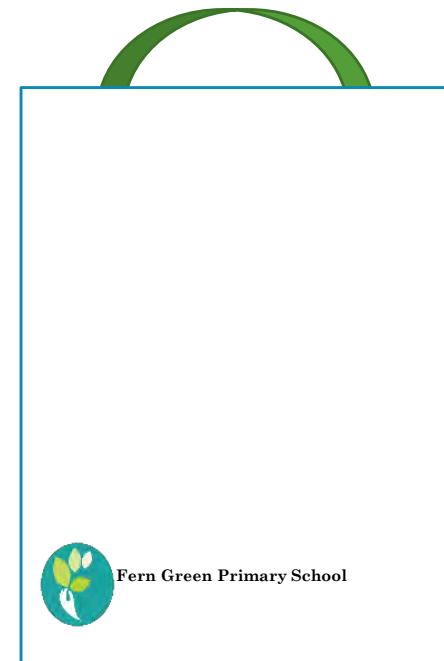


# Other Administration Matters & Resources




## What's In the Tote Bag

- School Newsletter 2022
- Lanyard for P1/2023 Student
- Information Sheet on Sales of School Uniforms
- Advisory by LTA:  
Practise Road Safety at School Zones
- P1/2023 Booklist



Lanyard and Pass for Student (with Indication of Dismissal Arrangement)



**Fern Green Primary School**

Name : \_\_\_\_\_

Class : 1 \_\_\_\_\_ (       )

Dietary Preference: Halal / Non-Halal / Vegetarian

Dismissal Arrangement ( ✓ )		
Gate (       )	School Bus (       )	School SCC (       )
No.:	No.:	SCC Class:

Please help to fill this up before the First Day of School

# Resourcing for 2022

## Purchase of School Textbooks / Learning Resources

Our provider for school bookshop services is Casco Educational Supply Pte Ltd.  
Parents may purchase the school textbooks

- Online from 7 November to 20 December 2022
- On-site from 28 to 30 November & 5 to 30 December 2022

Operating Hours	Operating Dates	Note
9am to 3pm	28 to 30 Nov 2022	P1/2023
	5 to 30 Dec 2022	
	12 to 14 Dec 2022	FAS/2023
Closed on Saturdays, Sundays, Public Holidays and Eve of Public Holidays.		

Parents may make your purchases by making an online appointment via the school webpage:

<https://ferngreenpri-moe-edu-sg-admin.cwp.sg/general-information/bookshop-services>





# Resourcing for 2022

## Purchase of School Uniforms

Our provider for school attire is Shanghai School Uniforms Pte Ltd. Parents may purchase the school attire

- online from 7 November 2022
- on-site from 28 November 2022 to 16 December 2022 (9am to 3pm)

**NB: 12 to 14 December are set aside for Students on FAS**

Parents may make your purchases by making an online appointment via the school webpage:

<https://ferngreenpri-moe-edu-sg-admin.cwp.sg/general-information/bookshop-services>



# Resourcing for 2022

## Booking of School Bus Services

Parents may **register your interest** at <https://forms.gle/yXVS136HWysGNcz5A> for school bus services **by Friday, 25 November 2022** as the service provider will need time to plan and confirm the routes.

You may email [may@btntan.com](mailto:may@btntan.com) or call 6483 4527 for more information.



## Financial Assistance Scheme

Students who have applied for MOE Finance Assistance by 28 October 2022 will receive the outcomes of their applications **by Friday, 25 November 2022**.

The school has set aside 3 days from 12 to 14 December for students who are successful in their FAS application to collect their school attire and books. Students will receive their approval letter by Friday, 25 November 2022.



# Resourcing for 2022

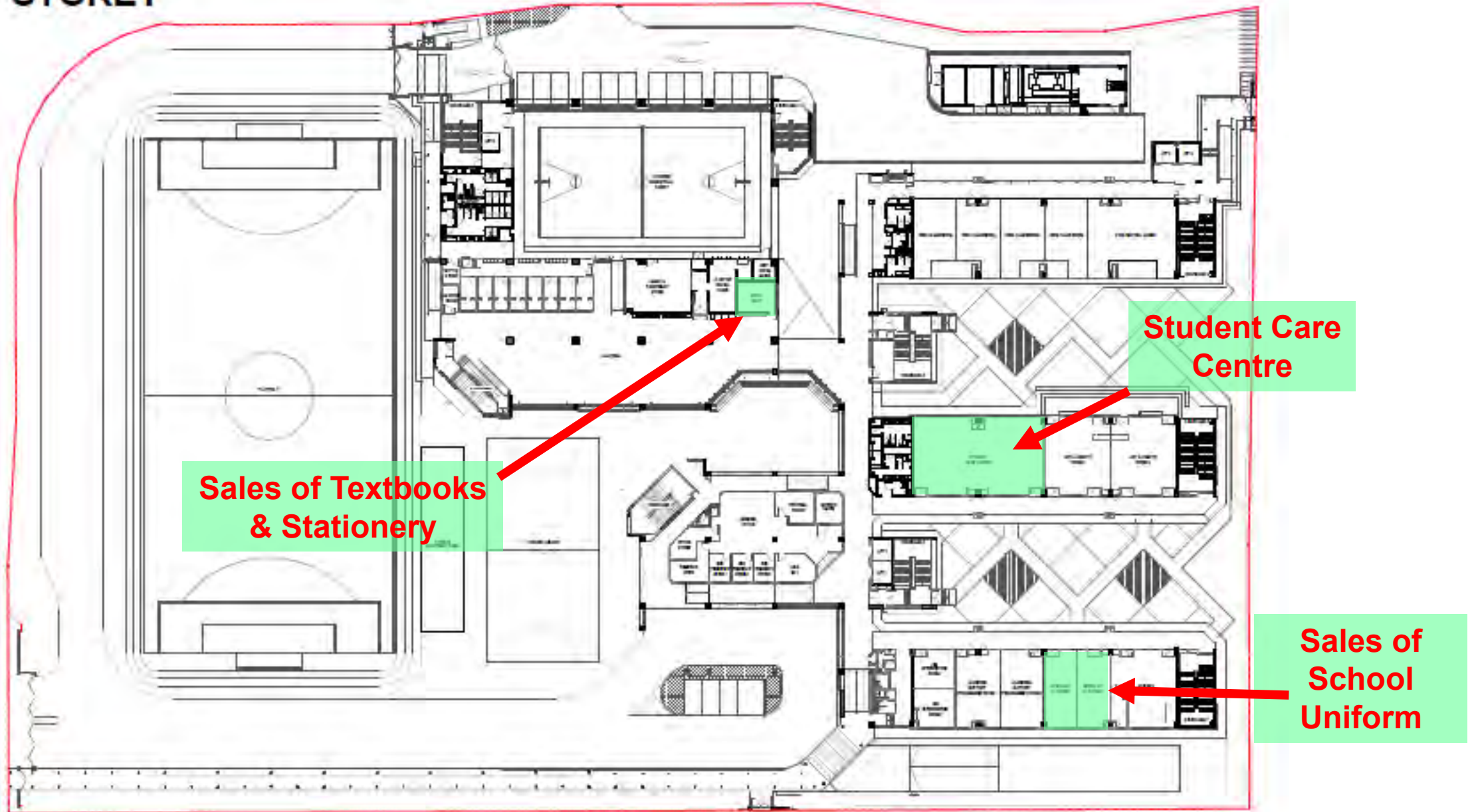
To prevent overcrowding and reduce waiting time, the school has worked with the school service providers to set up an appointment booking system.

Please book an appointment before coming to the school for onsite purchase or self collection.

If you are unwell, please refrain from coming to the school. You may reschedule your appointment at the appointment page or email the school at [ferngreen\\_ps@moe.edu.sg](mailto:ferngreen_ps@moe.edu.sg)

# 1<sup>st</sup> STOREY

For On-Site Purchases & Administration  
(Parents are strongly encouraged to go online)



Other Administration Matters

# Download the slides here from next week:


You can also visit the school website at

[https://ferngreenpri.moe.edu.sg/  
general-information/quick-  
download](https://ferngreenpri.moe.edu.sg/general-information/quick-download)



Scan the QR Code with your mobile phone/device.



Time	Item
2.00pm	<b>Registration &amp; Collection of Orientation Packs</b>
2.30pm	<b>Welcome by School Leaders</b> [Students will be led to respective classrooms after this.]
2.40pm	<b>Briefing by Vice-Principal (Academic)</b> <ul style="list-style-type: none"> <li>School Matters</li> </ul>
3.15pm	<b>Briefing by Vice-Principal (Administration)</b> <ul style="list-style-type: none"> <li>Administration and Operational Matters</li> </ul>
 3.45pm	<b>Briefing by Year Head (Lower Primary)</b> <ul style="list-style-type: none"> <li>Class &amp; Level Matters</li> </ul> [Ushers will assist parents to pick your child up from the respective classrooms.]
4.15pm	<b>[for Parents who have enrolled your children in the SCC]</b> <b>Introduction by School-Based Student Care Centre (SCC) Service Provider, Raffles Student Care Learning Centre LLP</b> [Ushers will assist remaining parents to pick your child up from the respective classrooms.]

# Programme Outline



Fern Green

# Thank You!

P1 Orientation

Friday, 18 November 2022

Kindly update the school as soon as possible if there is any change to personal particulars or contact details. Thank you!