



Fern Green

Welcome to Fern Green Primary School

Briefing for P1 Parents on First Day of School
Tuesday, 3 January 2023

School Orientation 2023 for P1 Parents & Students



Scan to
Access School Calendar & Download Notification



2023 Curriculum Structure

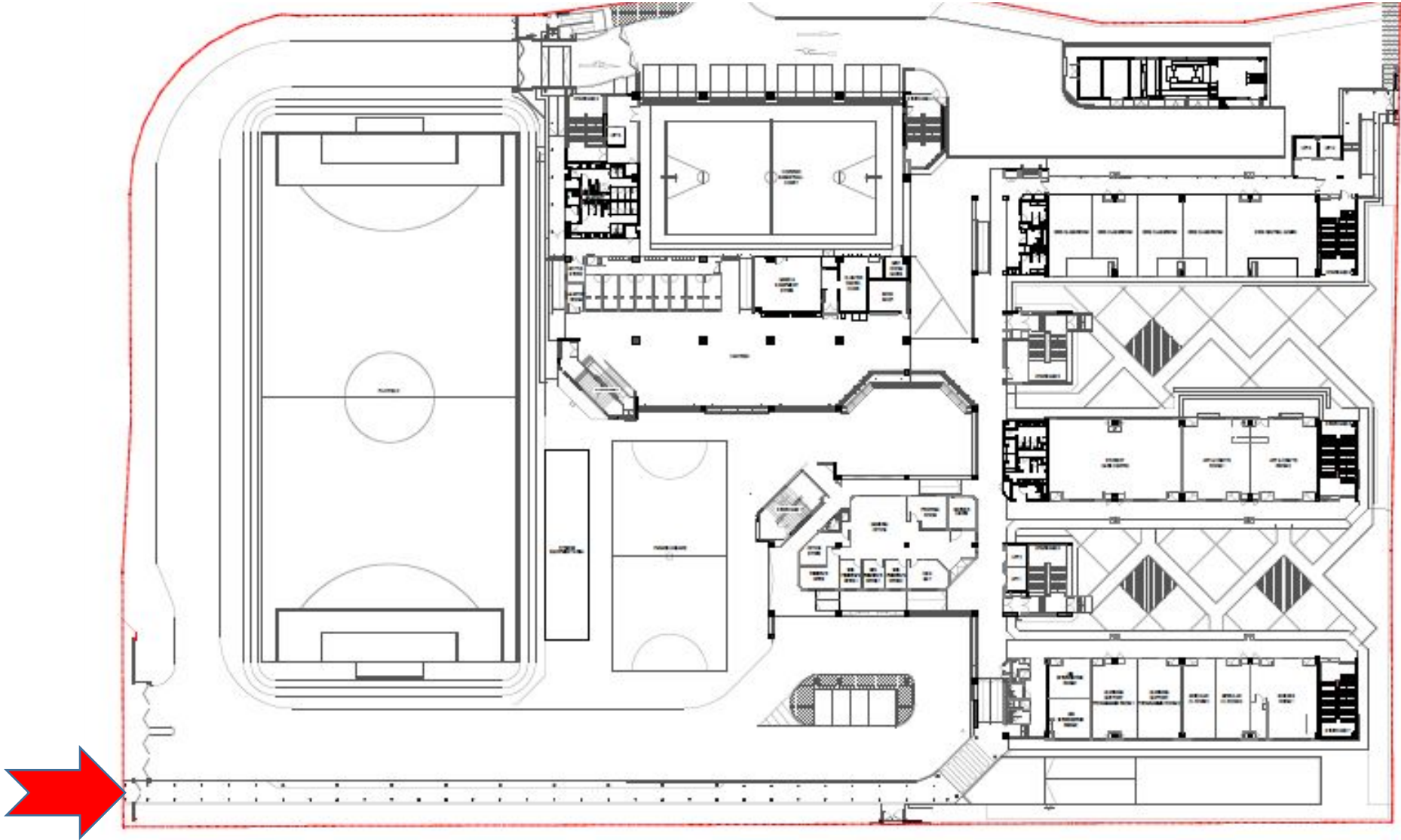
Time	Period			Mon (0715: USSR @MPH)	Tue (0715: USSR, SEAIP)	Wed (0715: USSR)	Thu (0715: USSR, SEAIP)	Fri (0715: USSR @MPH)
0730	1			Assembly/CCT			FTGP	
0800	2			Assembly/CCT			FTGP	
0830	3			<i>P3&6 Snack Break (0845, 10 min)</i>	<i>P3&6 Snack Break (0845, 10 min)</i>	<i>P3&6 Snack Break (0845, 10 min)</i>	<i>P3&6 Snack Break (0845, 10 min)</i>	<i>P3&6 Snack Break (0845, 10 min)</i>
0900	4							
930	P1&4	5	5	P1&4 Recess	P1&4 Recess	P1&4 Recess	P1&4 Recess	P1&4 Recess
1000	5	P2&5	6	P2&5 Reess	P2&5 Recess	P2&5 Recess	P2&5 Recess	P2&5 Recess
1030	6	6	P3&6	P3&6 Recess	P3&6 Recess	P3&6 Recess	P3&6 Recess	P3&6 Recess
1100	7							
1130	8			<i>P1&4 Snack Break (1145, 10 min)</i>	<i>P1&4 Snack Break (1145, 10 min)</i>	<i>P1&4 Snack Break (1145, 10 min)</i>	<i>P1&4 Snack Break (1145, 10 min)</i>	<i>P1&4 Snack Break (1145, 10 min)</i>
1200	9			<i>P2&5 Snack Break (1215, 10 min)</i>	<i>P2&5 Snack Break (1215, 10 min)</i>	<i>P2&5 Snack Break (1215, 10 min)</i>	<i>P2&5 Snack Break (1215, 10 min)</i>	<i>P2&5 Snack Break (1215, 10 min)</i>
1230	10							
1300	11			<i>Daily Cleaning (10 min before dismissal)</i>	<i>Daily Cleaning (10 min before dismissal)</i>	<i>Daily Cleaning (10 min before dismissal)</i>	<i>Daily Cleaning (10 min before dismissal)</i>	<i>Daily Cleaning (10 min before dismissal)</i>
1330				<i>1325: P1&2 Dismissal 1330: P3&4 Dismissal 1335: P5&6 Dismissal</i>	<i>1325: P1&2 Dismissal 1330: P3&4 Dismissal 1335: P5&6 Dismissal</i>	<i>1325: P1&2 Dismissal 1330: P3&4 Dismissal 1335: P5&6 Dismissal</i>	<i>1325: P1&2 Dismissal 1330: P3&4 Dismissal 1335: P5&6 Dismissal</i>	<i>1325: P1&2 Dismissal 1330: P3&4 Dismissal 1335: P5&6 Dismissal</i>
1400				Support/Enrichment Prog.	Support Prog. CCA		Support/Enrichment Prog.	Support Prog.
1430				Support/Enrichment Prog.	CCA		Support/Enrichment Prog.	
1500				Support/Enrichment Prog.	CCA		Support/Enrichment Prog.	
1530				Support/Enrichment Prog.	CCA		Support/Enrichment Prog.	
1600					CCA <i>(Ends 1600/1630)</i>			

USSR: Uninterrupted Sustained Silent Reading
SEAIP: Strategies to Ensure more Attention to Individual Pupils (one-to-one student-teacher interaction)
CCT: Class Contact Time
FTGP: Form Teacher Guidance Period

Students are to report to their respective classrooms (or the Multi-Purpose Hall) **by 7.30am, beyond which they would be considered late for school.**

Gate 1 (next to Main Gate)

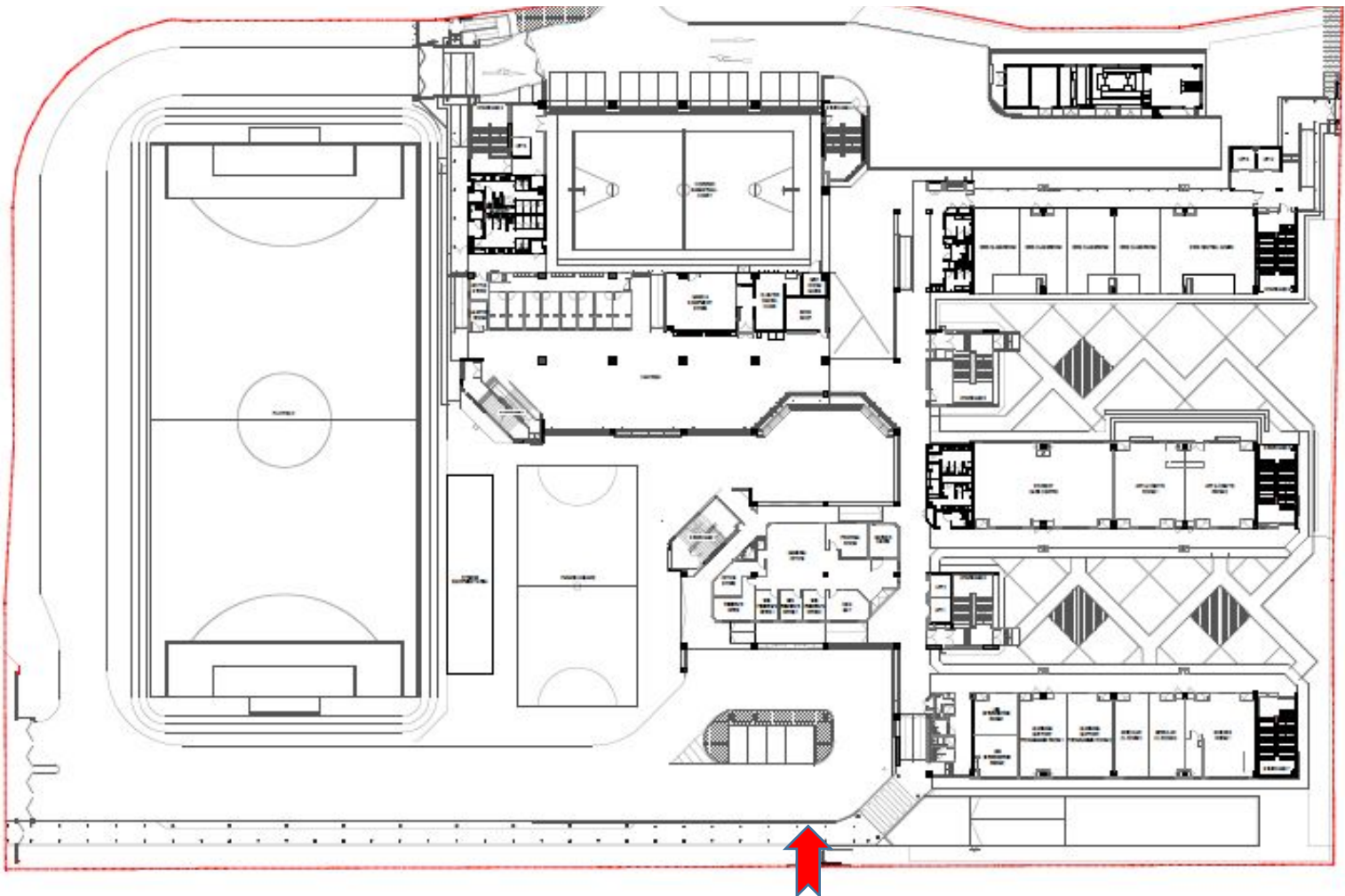
School Days		School Holidays	
Monday to Friday	6.45am to 1.00pm	Monday to Friday	7.00am to 7.00pm
	1.55pm to 7.00pm		



Gate Opening Hours

Gate 2 (nearest to General Office)

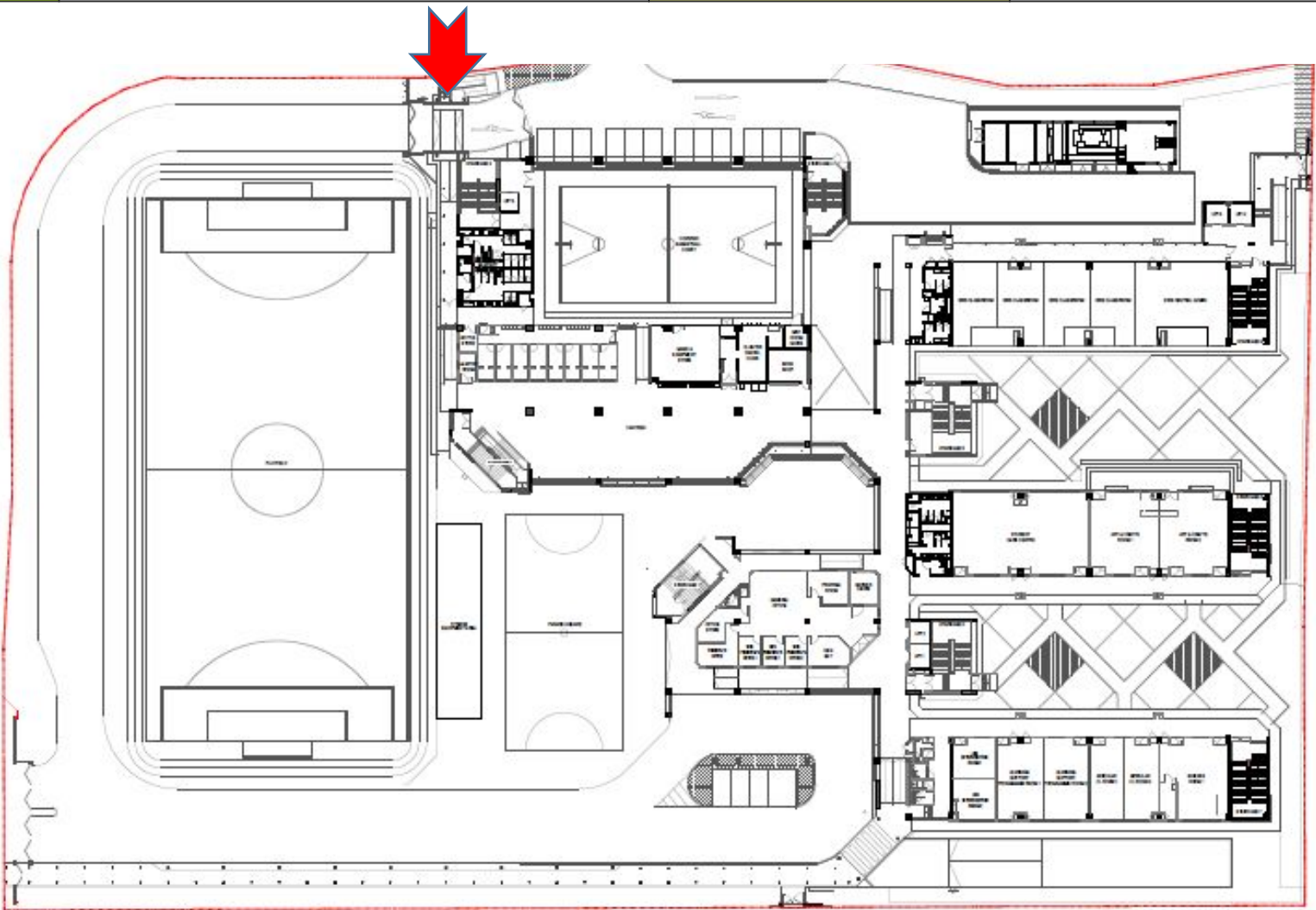
School Days		School Holidays	
Monday to Friday	6.45am to 8.00am	Monday to Friday	7.00am to 8.00am
	1.25pm to 2.00pm		5.45pm to 7.00pm
	5.45pm to 7.00pm		



Gate Opening Hours

Gate 4

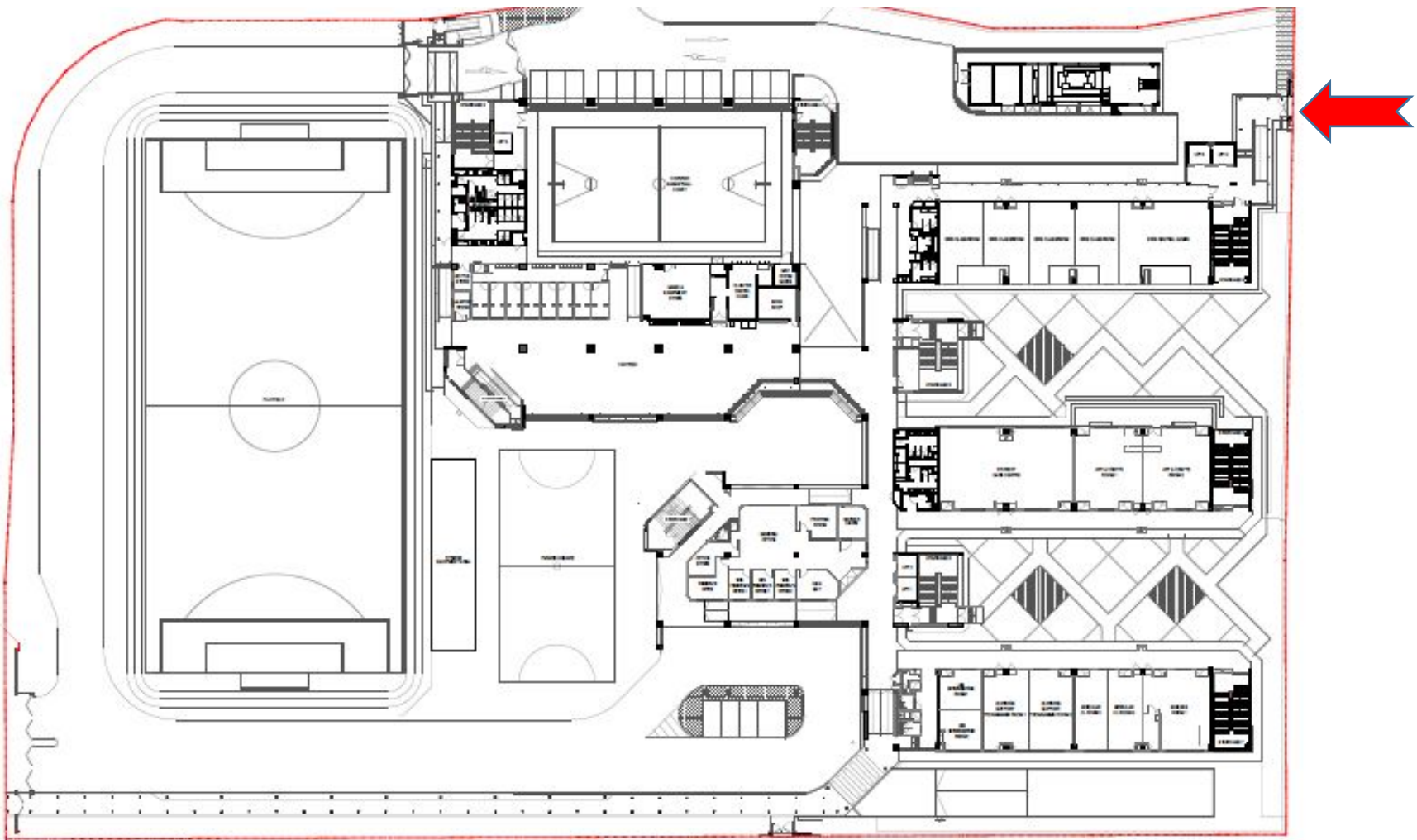
School Days		School Holidays	
Monday to Friday	6.45am to 7.45am	Monday to Friday	Closed
	1.30pm to 2.00pm		



Gate Opening Hours

Gate 3 (Strictly for MOE Kindergarten @ Fern Green only)

School Days		School Holidays	
Monday to Friday	7.00am to 7.00pm	Monday to Friday	7.00am to 7.00pm

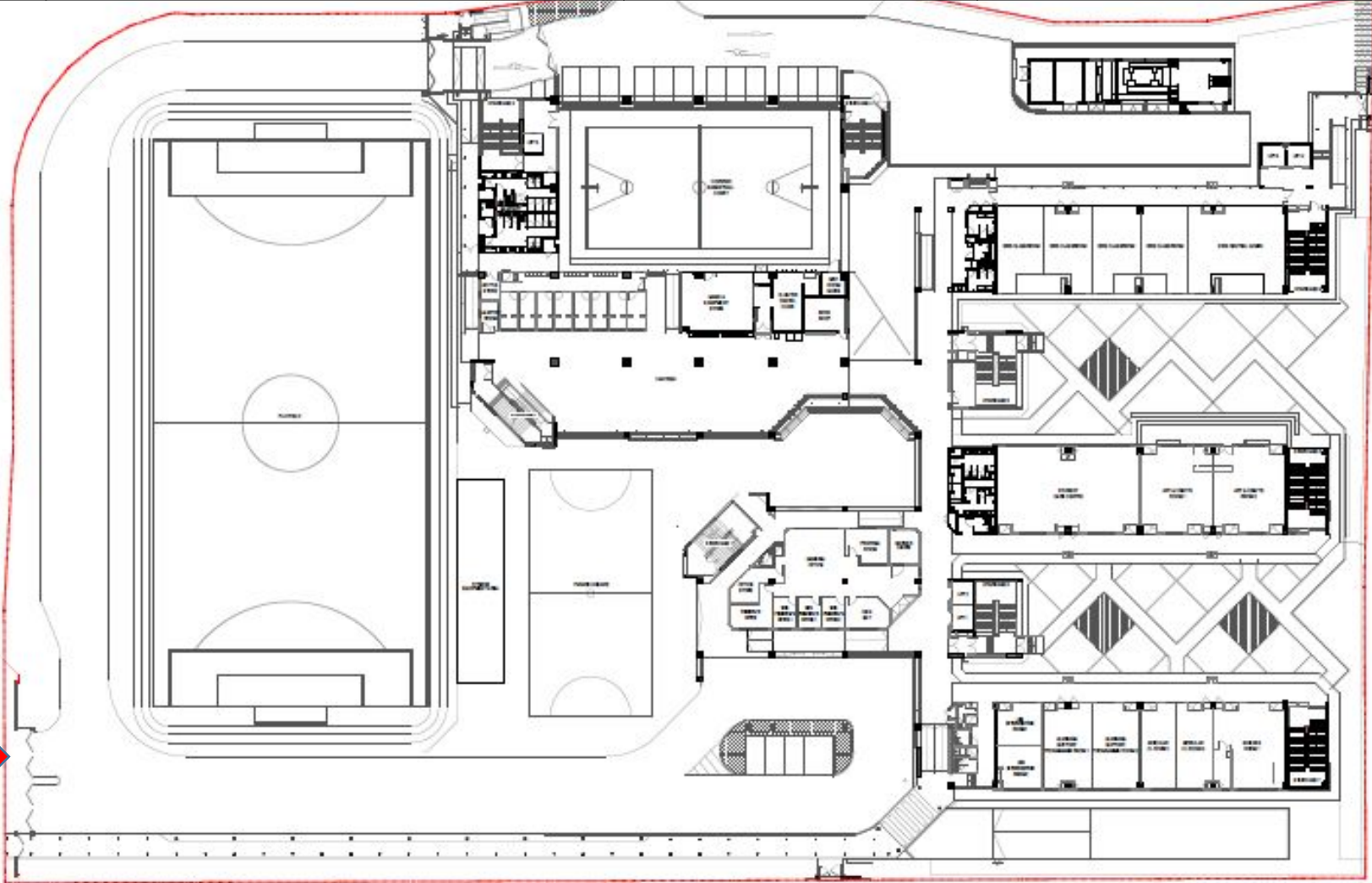
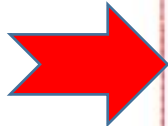


Gate Opening Hours

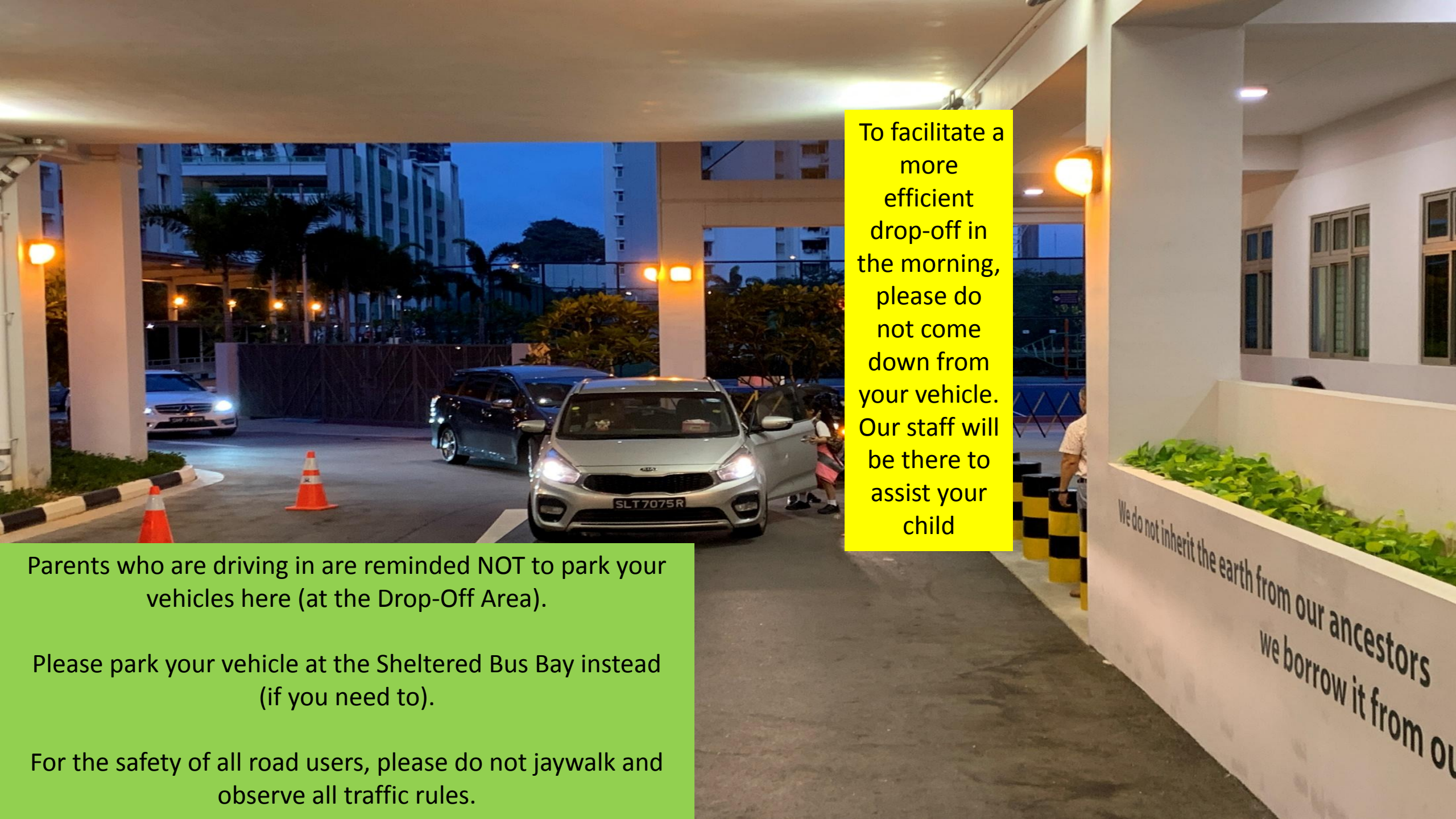
Main Gate (for Vehicles)

School Days		School Holidays	
Monday to Friday	6.45am to 7.30am	Monday to Friday	7.00am to 7.00pm
	8.00am to 1.00pm		
	1.55pm to 7.00pm		

Main Gate will
be closed
from 7.30am
to 8.00am



Gate Opening Hours



To facilitate a more efficient drop-off in the morning, please do not come down from your vehicle. Our staff will be there to assist your child

Parents who are driving in are reminded NOT to park your vehicles here (at the Drop-Off Area).

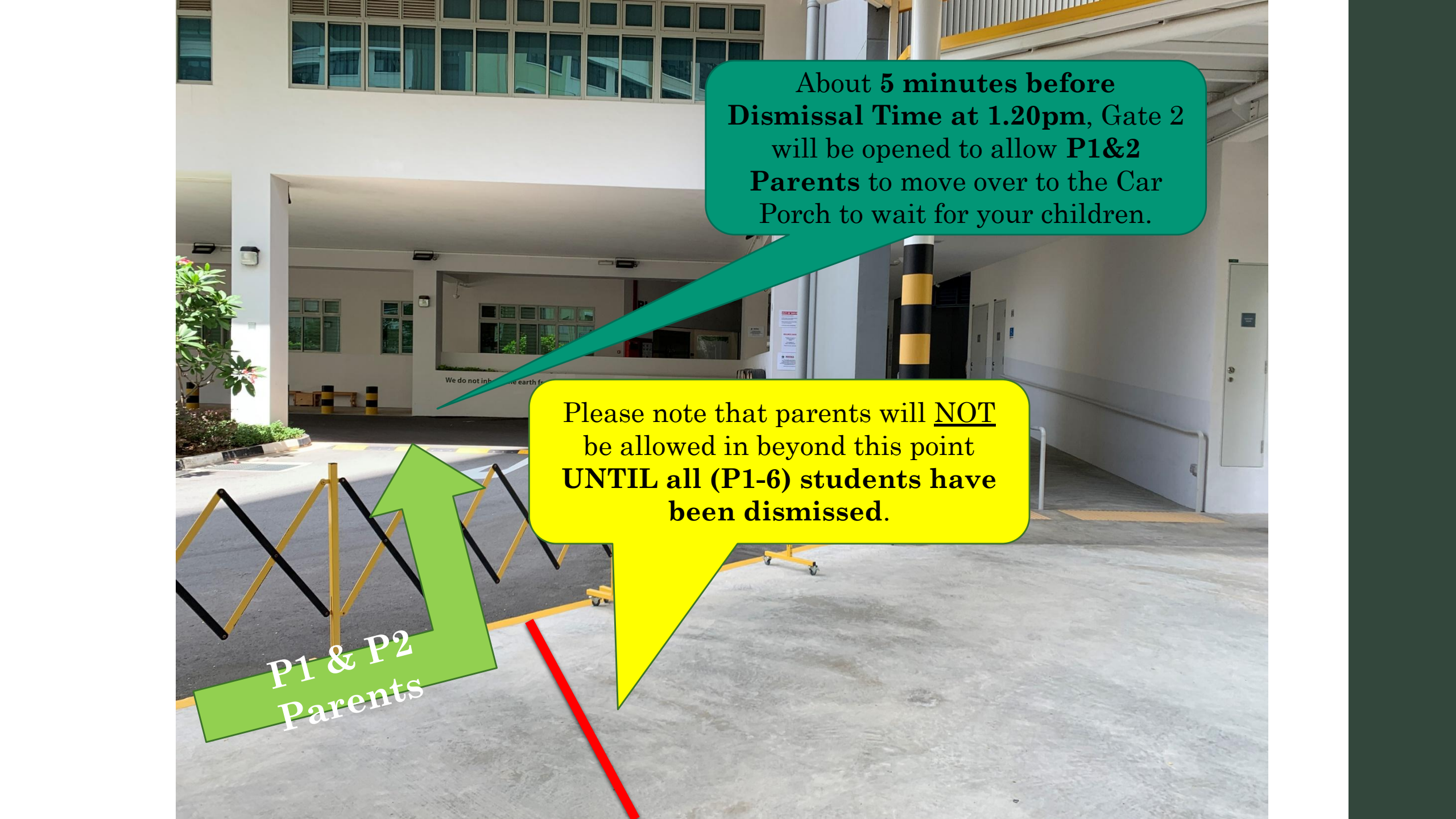
Please park your vehicle at the Sheltered Bus Bay instead (if you need to).

For the safety of all road users, please do not jaywalk and observe all traffic rules.

We do not inherit the earth from our ancestors
we borrow it from our children



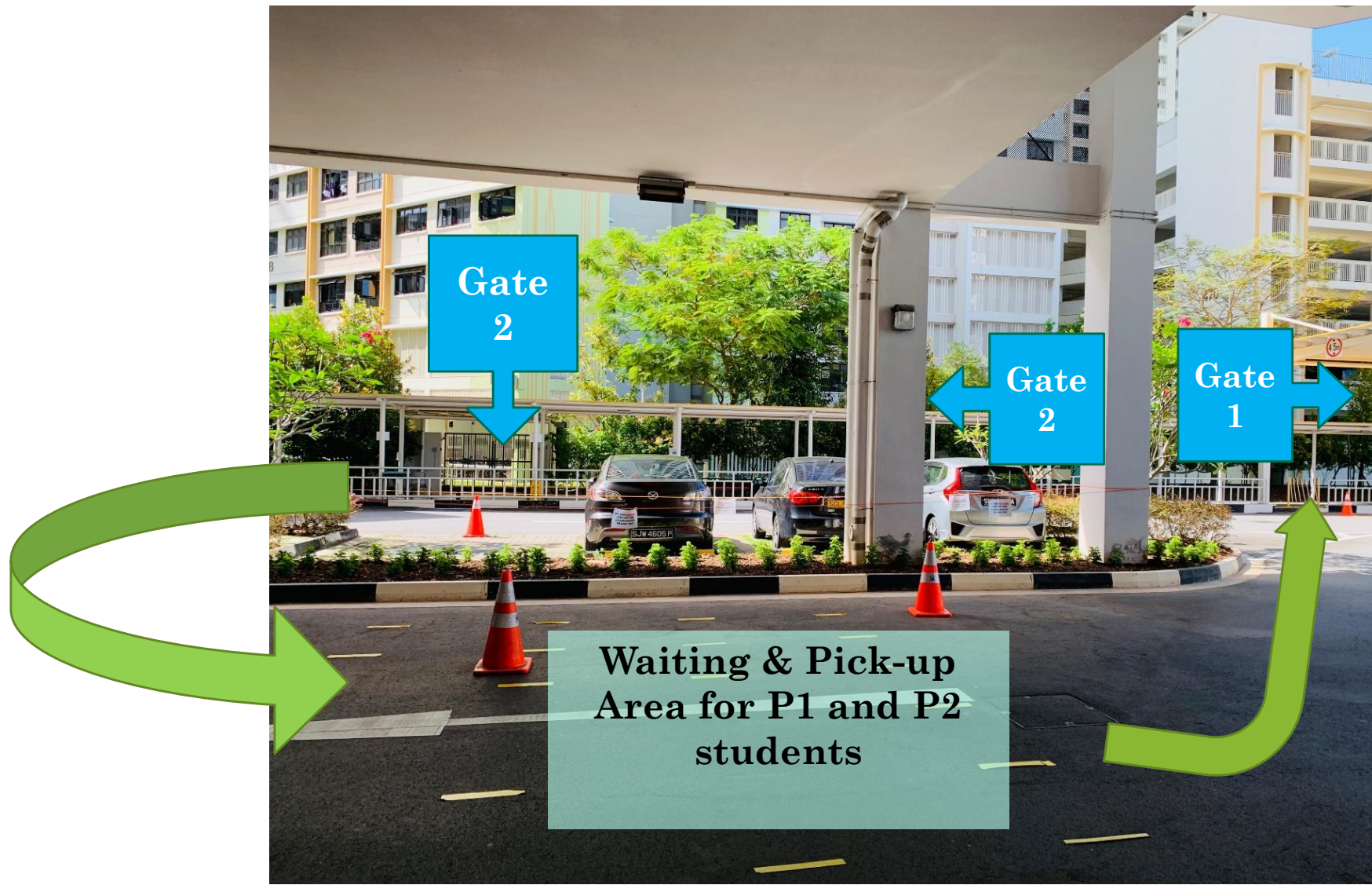
Dismissal Arrangements



About **5 minutes before Dismissal Time at 1.20pm**, Gate 2 will be opened to allow **P1&2 Parents** to move over to the Car Porch to wait for your children.

Please note that parents will NOT be allowed in beyond this point **UNTIL** all (P1-6) students have been dismissed.

**P1 & P2
Parents**





Gate 2

Gate 1

OUT

After picking your children up at the **Car Porch**, P1&2 Parents can proceed to the covered walkway and leave via Gate 1 or Gate 2

IN

To better facilitate movements of Students & Parents during this peak period, please follow these directional flows.

If Parents of P1&2 Students are late, you can expect to see your children waiting here with the teachers.

OUT

IN

OUT

IN



OUT

IN

Students taking the School Bus
will be led to the buses waiting
at the bus bay **after all
classes have been
dismissed.**

Towards
School
Bus

Dismissal of SCC students

Waiting Area for Parents who are picking your children up from the SCC **in the afternoon.**

(SCC Programme Staff will station here in the afternoon, after School Dismissal; they will radio-call the SCC to send/bring your child out.)

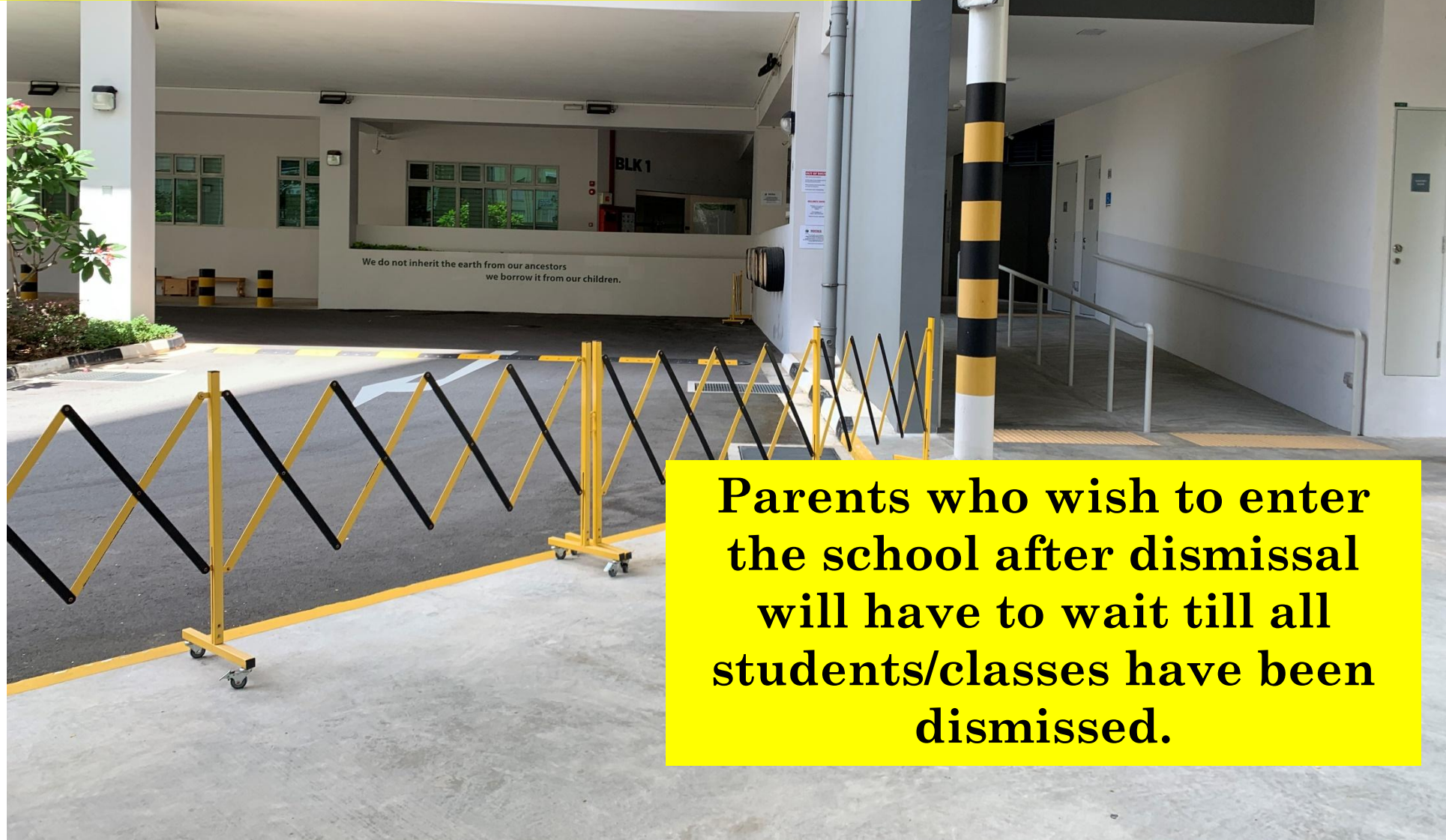
Please note that Gate 2 will only be opened for parents with children enrolled in the SCC before 5.45pm.

Gate 2 will only open again for all at 5.45pm in the afternoon.

Parents can use Gate 1 (next to the Main Gate) if you come in before 5.45pm.



Gentle Reminder



Parents who wish to enter the school after dismissal will have to wait till all students/classes have been dismissed.



Book Shop

Out of bounds beyond
this point



Thank You!